



**WORLD'S BEST
ALLOY BULLBARS**

East Coast Bullbars (ECB Pty Ltd)

Tel: 07 3897 5700

Fax: 07 3283 1168

ecb@ecb.com.au www.ecb.com.au

29 Snook St
Clontarf QLD 4019
Australia

Po Box 122
Margate QLD 4019
Australia

BT61SY

REPLACES: 16.02.10

REVISED: 29.06.10

FITTING INSTRUCTIONS

HILUX 11/97- 2/05 4WD BIG TUBE™ (NOT SUITABLE FOR WINCH RETRO FITMENT) VEHICLE FRONTAL PROTECTION SYSTEM (VFPS) FOR AIR BAG & ADR COMPLIANT VEHICLES

Check installation hardware before commencing.

1. Remove bumper bar from vehicle by removing one plastic cap from plastic inner guard and pull inner guard clear, one 12mm head nut (each side) at bumper side returns. Two 14mm head bolts (each side) on chassis brackets.
2. Remove indicators from vehicle one PK screw above headlight and splice ECB indicator / park light wiring (supplied – connected to indicator / park lights with plug) into original indicator / park light wiring. Use cable locks (supplied). Refit indicators into vehicle.
3. Remove crush components, tow hook and tie down brackets. Discard tie down brackets & crush components.
4. Position steel mounts (supplied) and attach to front of chassis using the M8 x 75 x 1.25 bolts (supplied). **NOTE:** Do not tighten any bolts until all are in place. **See figure 1.**
5. Insert the original bolts into the standard bumper mount holes.
6. Insert original bolts into the tie down bracket holes on passengers' side. Discard tie down bracket.
7. Position the tow hook and original steel spacer plate on drivers' side and secure using the original bolts. **See figure 2.** Discard drivers side tie down bracket. **NOTE:** Ensure steel mounting brackets are centred with body and have sufficient space for protection bar to mount on outside of steel mounting brackets.
8. **TIGHTEN ALL BOLTS.**
9. Attach infill trim (supplied) to top sides of ECB protection bar. **NOTE:** Trim 30mm off lower edge so trim will sit over end of protection bar. **See figures 3 and 4. Trim excess off end to follow protection bar. See figure 5.** **NOTE:** Seal any exposed edges of trim with silicone or similar to avoid corrosion of inner steel.
10. Fit ECB LED indicator / park lights (supplied) into protection bar as per instructions supplied with the LED indicator kit. **NOTE: Ensure park light is to outside. See figure 6.**
11. Position ECB bullbar on outside of steel mounting brackets and attach using the ½ x 1 ½ bolts and nuts (supplied).
12. Align protection bar with vehicle, approximately 4-6mm clearance under grille. Align level at side returns with approximately 20mm clearance to be taken up with infill trim. **See figure 7. TIGHTEN ALL BOLTS.**
13. Connect ECB indicator / park lights. **CHECK FOR CORRECT OPERATION.**
14. Refit plastic inner guard inside of protection bar. **See figure 8.**

ENSURE NUMBER PLATE IS CLEARLY VISABLE



East Coast Bullbars (ECB Pty Ltd)

Tel: 07 3897 5700

Fax: 07 3283 1168

ecb@ecb.com.au www.ecb.com.au

29 Snook St
Clontarf QLD 4019
Australia

Po Box 122
Margate QLD 4019
Australia

WORLD'S BEST
ALLOY BULLBARS

Note: When fitting/refitting the licence plate to the vehicle, ensure there is no obstruction to licence plate vision in accordance with local authorities. If required relocate licence plate to an alternate location.

Further VFPS Notes:

- a) Do not attach VFPS to the vehicle using anchorages not intended for this purpose (e.g. engine mounting bolts).
- b) Do not use this product for any vehicle make or model, other than those specified by the VFPS manufacturer.
- c) Do not remove the plaque or label from the VFPS.
- d) Do not modify the structure of the VFPS in any way.
- e) No accessory or fitment should project forward of the VFPS forward profile.
- f) **ENSURE THESE INSTRUCTIONS ARE LEFT WITH VEHICLE OWNER AND/OR OPERATOR.**

IMPORTANT INFORMATION

Periodically check bolts and nuts for correct tightness, especially if travelling on rough roads

FITTING KIT

2 – Steel mounting brackets.	2 – 8mm spring washers.
4 – ½ x 1 ½ bolts/nuts.	2 – 680mm lengths black infill trim.
8 – ½ flat washers.	1 – ECB LED Indicator / Park light kit
4 – ½ spring washers	6 – Cable locks.
2 – M8 x 75 x 1.25 bolts.	
2 – 8mm flat washers.	



Figure 1



Figure 2



East Coast Bullbars (ECB Pty Ltd)

Tel: 07 3897 5700

Fax: 07 3283 1168

ecb@ecb.com.au www.ecb.com.au

29 Snook St
Clontarf QLD 4019
Australia

Po Box 122
Margate QLD 4019
Australia

WORLD'S BEST
ALLOY BULLBARS



Figure 3

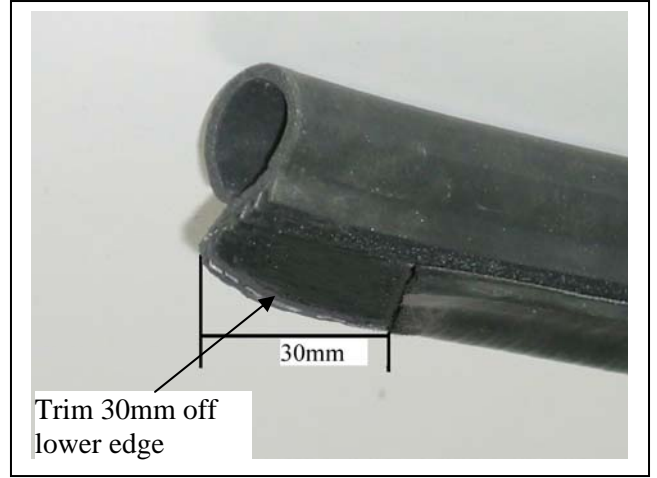


Figure 4

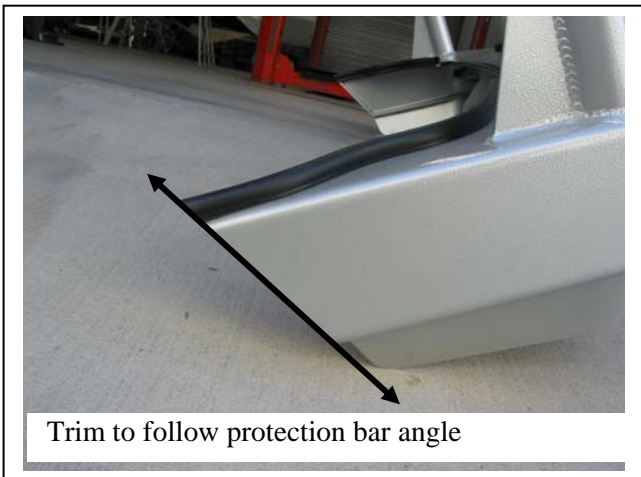


Figure 5

Note: Example only angle on bar maybe different to the above

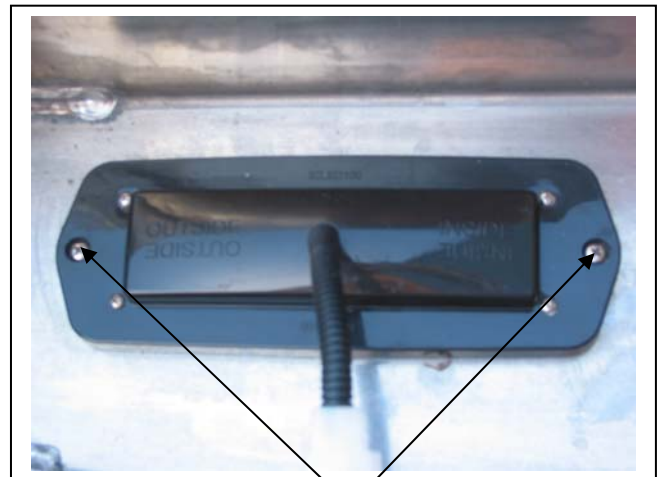


Figure 6

Stainless steel self-tappers



Figure 7



Figure 8



**WORLD'S BEST
ALLOY BULLBARS**

East Coast Bullbars (ECB Pty Ltd)

Tel: 07 3897 5700

Fax: 07 3283 1168

ecb@ecb.com.au www.ecb.com.au

29 Snook St
Clontarf QLD 4019
Australia

Po Box 122
Margate QLD 4019
Australia

We value your comments

Dear Fitter,

ECB would like to know how you went with the installation of this product. We value your comment and may need to contact you to clarify some details so please complete your contact details clearly.

We would appreciate if you could complete as many of the following details as possible.

Your Name:	Your contact No.
Product Part No.	Product Invoice No.
Product Description:	Make, model, and year of vehicle:
Product Work Order No.	Company your from/Company product purchased from:

Date of Fitment: ____/____/____

Was the fitting hardware supplied complete?

Yes

No

If no what was not supplied

Did the installation go well?

Yes

No

Please provide comments

Please draw diagrams if you need to.

Post to
Reply Paid 122
PO Box 122
Margate QLD 4019

Fax to
(07) 3283 1168



WORLD'S BEST
ALLOY BULLBARS

East Coast Bullbars (ECB Pty Ltd)

Tel: 07 3897 5700

Fax: 07 3283 1168

ecb@ecb.com.au www.ecb.com.au

29 Snook St
Clontarf QLD 4019
Australia

Po Box 122
Margate QLD 4019
Australia

DESPATCH CHECKLIST BT61SY

Work Order #	
Finish:	
Transport:	
Due Date:	

- 2 – Steel mounting brackets.
- 1 – Bolt Kit.
- 1 – ECB LED Indicator / Park light kit.
- 2 – 680mm lengths black infill trim.
- 2 – ECB overrides – **Fitted to bar.**
- 2 – 6mm air scoops – **Fitted to bar.**
- 3 – 3mm air scoops – **Fitted to bar.**

**See other side of
this page for
photos of all
mounts**



Is this product “the best it can be” Yes _____ / _____
Wrapper’s initials / Checker initials

If NO fix before continuing

All parts checked and completed by:

Nut and bolts: _____ Date __/__/__

Order control: _____ Date __/__/__

Final wrap check: _____ Date __/__/__



**WORLD'S BEST
ALLOY BULLBARS**

East Coast Bullbars (ECB Pty Ltd)

Tel: 07 3897 5700

Fax: 07 3283 1168

ecb@ecb.com.au www.ecb.com.au

29 Snook St
Clontarf QLD 4019
Australia

Po Box 122
Margate QLD 4019
Australia

